

I'M IN *for the moments that matter*

The only approved immunotherapy for adults with unresectable Stage 3 non-small cell lung cancer (NSCLC) whose disease has not progressed following chemotherapy and radiation given during the same time period (CRT).

IMFINZI HELPED PEOPLE LIVE LONGER FOLLOWING CRT VS PLACEBO

At 2 years, **66% of people who received IMFINZI® (durvalumab) were living**, compared with 56% of those who received placebo (no medicine).*

*Median overall survival (OS) was not reached with IMFINZI vs 28.7 months with placebo. Median OS is the length of time that half of the people are living. When more than half are living, median OS has not been reached. Median is the middle number in a group of numbers arranged from lowest to highest.

WHAT IS IMFINZI?

IMFINZI is a prescription medicine used to treat adults with **a type of lung cancer called non-small cell lung cancer (NSCLC)**. IMFINZI may be used when your NSCLC has not spread outside your chest, cannot be removed by surgery, **and** has responded or stabilized with initial treatment with chemotherapy that contains platinum, given at the same time as radiation therapy.

It is not known if IMFINZI is safe and effective in children.



SELECT SAFETY INFORMATION

What is the most important information I should know about IMFINZI?

IMFINZI is a medicine that may treat certain cancers by working with your immune system. IMFINZI can cause your immune system to attack normal organs and tissues in any area of your body and can affect the way they work. These problems can sometimes become severe or life-threatening and can lead to death. You can have more than one of these problems at the same time. These problems may happen anytime during treatment or even after your treatment has ended.

Please see additional Important Safety Information throughout and Full Prescribing Information including Medication Guide for IMFINZI.



GETTING STARTED WITH IMFINZI

When you're diagnosed with Stage 3 NSCLC, it can sometimes be difficult to know where to turn. Use this guide to learn more about Stage 3 NSCLC and how treatment with IMFINZI may help.

TABLE OF CONTENTS

Understanding Stage 3 non-small cell lung cancer	4
What is IMFINZI?	6
How was IMFINZI studied?	7
What were the results with IMFINZI?	8
How does IMFINZI work?	10
Preparing for treatment	12
Resources and support	14
Important Safety Information	16

SELECT SAFETY INFORMATION (continued)

Call or see your healthcare provider right away if you develop any new or worsening signs or symptoms, including:

Lung problems: cough, shortness of breath, and chest pain

Please see additional Important Safety Information throughout and Full Prescribing Information including Medication Guide for **IMFINZI**.

UNDERSTANDING STAGE 3 NSCLC

YOU'RE NOT IN THIS ALONE



Nearly
25%*
of people
with NSCLC are
diagnosed at
Stage 3.

*In the United States.

While there are different types of lung cancer, the most common type is non-small cell lung cancer (NSCLC). There are four main stages of NSCLC. If your doctor has diagnosed you with Stage 3 NSCLC, that means your cancer has not spread beyond the lungs and the nearby lymph nodes.

HOW IS STAGE 3 NSCLC TREATED?

When Stage 3 non-small cell lung cancer (NSCLC) cannot be removed by surgery, it's called unresectable. The first step in treatment is usually a combination of chemotherapy and radiation called **chemoradiation therapy (also known as CRT)**. The two treatments work in different ways to attack cancer.

CHEMOTHERAPY



attacks all fast-growing cells, including cancer cells.

RADIATION THERAPY



targets DNA in cancer cells to keep them from growing.



IMFINZI may not work for everyone.
It is not known if IMFINZI is safe
and effective in children.

PREPARE WITH YOUR DOCTOR



If you are currently going through or have recently completed CRT, it's important to continue working with your doctor to be prepared for what's next.

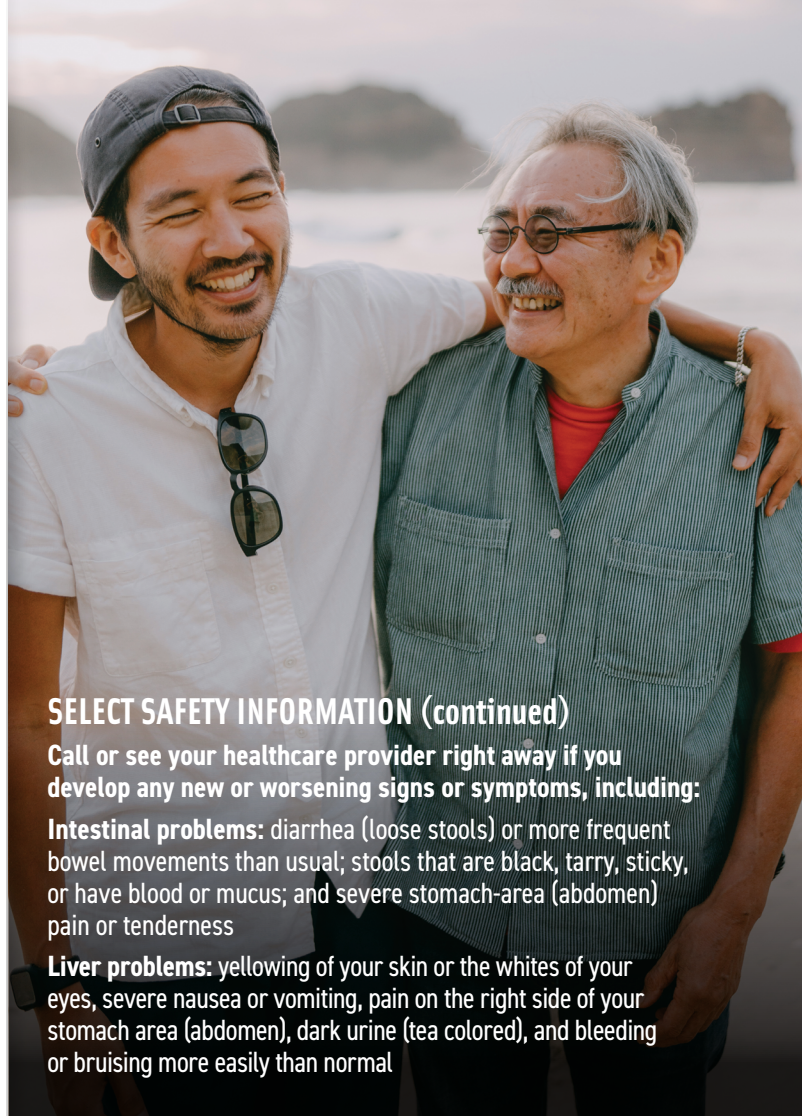
WHAT IS IMFINZI?

IMFINZI IS AN IMMUNOTHERAPY

IMFINZI is a type of cancer treatment that works with the immune system to find and attack certain types of cancer. IMFINZI may also cause the immune system to attack healthy cells.



IMFINZI is the only immunotherapy approved for people with unresectable Stage 3 NSCLC whose disease has not progressed after CRT.



SELECT SAFETY INFORMATION (continued)

Call or see your healthcare provider right away if you develop any new or worsening signs or symptoms, including:

Intestinal problems: diarrhea (loose stools) or more frequent bowel movements than usual; stools that are black, tarry, sticky, or have blood or mucus; and severe stomach-area (abdomen) pain or tenderness

Liver problems: yellowing of your skin or the whites of your eyes, severe nausea or vomiting, pain on the right side of your stomach area (abdomen), dark urine (tea colored), and bleeding or bruising more easily than normal

HOW WAS IMFINZI STUDIED?

A clinical trial compared 2 groups of patients with unresectable Stage 3 non-small cell lung cancer (NSCLC) who completed at least 2 cycles of platinum-based chemotherapy given at the same time as radiation (also known as CRT).



**476 patients
received IMFINZI**

after CRT for up to 12 months or until disease progression was confirmed.



**237 patients
received placebo**

(no medicine) after CRT, which was standard treatment at the time of the study.

Patients in the study had good performance status, meaning a World Health Organization (WHO) grade of 0 or 1. A grade of 0 means they were able to do all activities they were able to do before their disease. A grade of 1 means they were not able to carry out physically strenuous activities, but were still able to do light work.

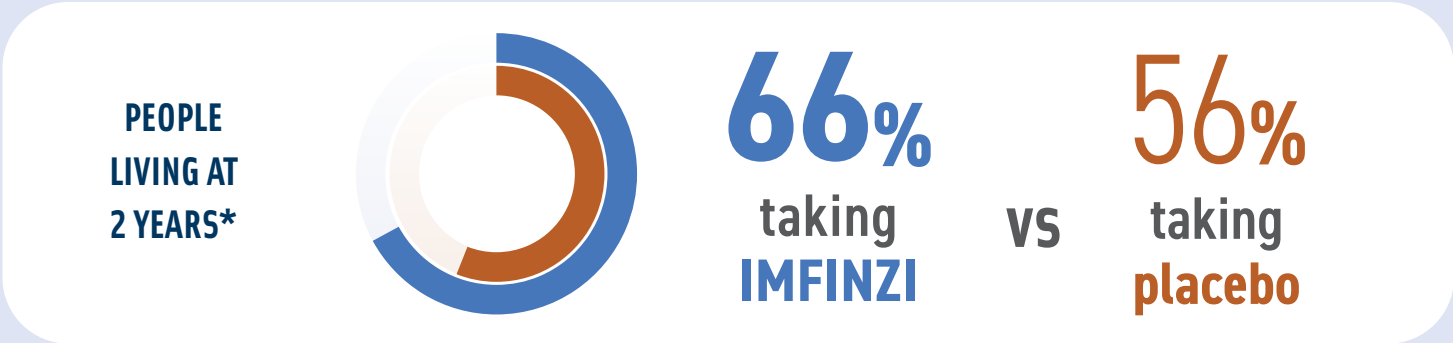
IMFINZI was tested against placebo (no medicine). There were 2 main goals of the trial. The first was to measure the length of time people survived without their cancer growing or spreading (called progression-free survival). The second was to measure how long they lived (called overall survival).

Please see additional Important Safety Information throughout and Full Prescribing Information including Medication Guide for IMFINZI.

WHAT WERE THE RESULTS WITH IMFINZI?

For unresectable Stage 3 non-small cell lung cancer after CRT

IMFINZI® (DURVALUMAB) HELPED PEOPLE LIVE LONGER AFTER CRT VS PLACEBO*



IMFINZI REACHED A 5-YEAR MILESTONE

In a follow-up analysis[†] at **5 years**, 43% of people who received IMFINZI and 33% of people who received placebo were living.

*Median overall survival (OS) was not reached with IMFINZI and was 28.7 months with placebo. Median OS is the length of time that half of the people are living. When more than half are living, median OS has not been reached. Median is the middle number in a group of numbers arranged from lowest to highest.
[†]Called a post-hoc analysis. Based on the limitations of the analysis, results are descriptive and your experience may differ. The post-hoc analysis was conducted approximately 5 years after the last patient started treatment in the PACIFIC study.

IMFINZI REDUCED THE CHANCE OF LUNG CANCER SPREADING VS PLACEBO



[‡]The median time tumors did not grow or spread was 16.8 months for the 476 patients receiving IMFINZI compared with 5.6 months for the 237 patients receiving placebo. IMFINZI may not work for everyone. Individual results may vary.
[§]The median amount of time patients were followed was 14.5 months for this analysis. Median is the middle number in a group of numbers arranged from lowest to highest.

SELECT SAFETY INFORMATION (continued)

Call or see your healthcare provider right away if you develop any new or worsening signs or symptoms, including:
Hormone gland problems: headaches that will not go away or unusual headaches; eye sensitivity to light; eye problems; rapid heartbeat; increased sweating; extreme tiredness; weight gain or weight loss; feeling more hungry or thirsty than usual; urinating more often than usual; hair loss; feeling cold; constipation; your voice gets deeper; dizziness or fainting; and changes in mood or behavior, such as decreased sex drive, irritability, or forgetfulness

HOW DOES IMFINZI WORK?

MEET THE KEY PLAYERS



HEALTHY CELL



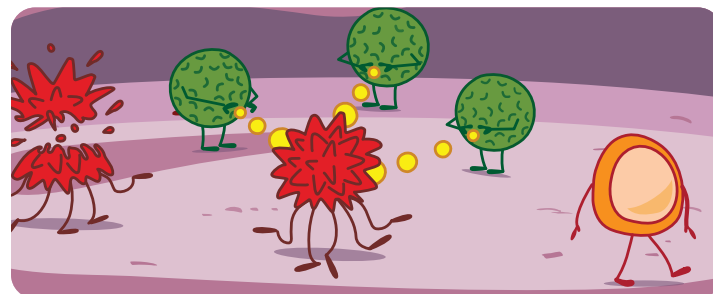
CANCER CELL



IMMUNE SYSTEM

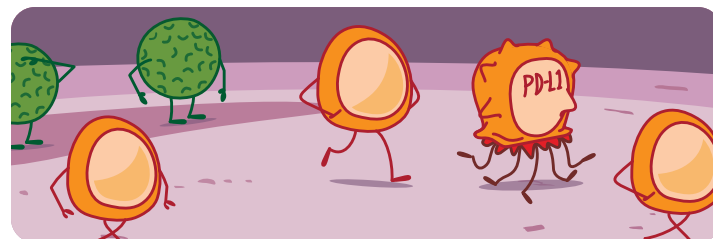


IMFINZI



1

When cancer cells appear in your body, your immune system works to recognize and attack them.



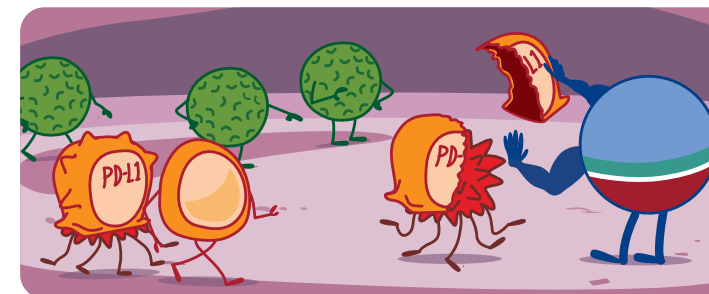
2

PD-L1 is a protein that disguises cancer cells from the immune system.

SELECT SAFETY INFORMATION (continued)

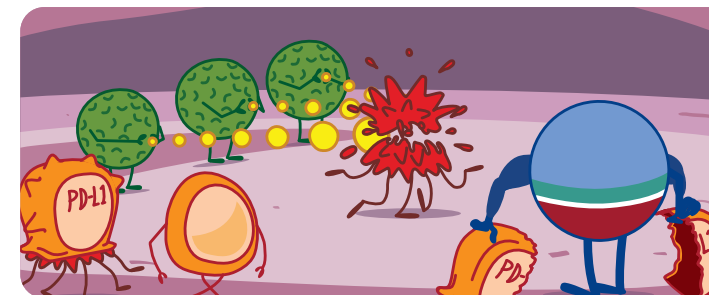
Call or see your healthcare provider right away if you develop any new or worsening signs or symptoms, including:

Kidney problems: decrease in your amount of urine, blood in your urine, swelling of your ankles, and loss of appetite



3

IMFINZI works by binding to and blocking PD-L1 to remove the disguise...



4

...so your immune system is better able to find and attack these cancer cells. There is a chance that IMFINZI may affect healthy cells, too.

Please see additional Important Safety Information throughout and Full Prescribing Information including Medication Guide for **IMFINZI**.

WANT TO SEE THE TEAM IN ACTION?

Visit [IMFINZI.com](https://www.imfinzi.com) to watch a video about how IMFINZI works.

IMFINZI[®]
durvalumab
Injection for Intravenous Use 50 mg/mL

PREPARING FOR TREATMENT

KEY FACTS TO KNOW ABOUT YOUR INFUSION

IMFINZI IS AN INTRAVENOUS (IV) INFUSION



Depending on your doctor's office, you may receive treatment in their office or at a local infusion center.

HOW LONG IS AN INFUSION?



The infusion usually lasts approximately 60 minutes. Your doctor will test your blood to monitor you for certain side effects.

INFUSIONS MAY BE GIVEN EVERY 2 OR 4 WEEKS



There are two dosing options to receive your infusion: every 2 weeks or every 4 weeks for up to a year. Your doctor will determine how often and how long you will receive IMFINZI. You will stop receiving IMFINZI if your disease progresses or if your side effects are too difficult to manage.

SELECT SAFETY INFORMATION (continued)

Call or see your healthcare provider right away if you develop any new or worsening signs or symptoms, including:

Skin problems: rash; itching; skin blistering or peeling; painful sores or ulcers in mouth or nose, throat, or genital area; fever or flu-like symptoms; and swollen lymph nodes

PREPARING FOR YOUR INFUSION

It's important that you feel as comfortable as possible, especially on days you have treatment. So to help infusion days go smoothly, here are a few things you should keep in mind:



Get to the office early to take care of any paperwork



Don't forget your insurance card



If possible, wear comfortable clothing



If you have any questions, write them down

Please see additional Important Safety Information throughout and Full Prescribing Information including Medication Guide for **IMFINZI**.

WANT SOME MORE TIPS?

Visit [IMFINZI.com](https://www.imfinzi.com) to get more tips on how to prepare for your appointments.

RESOURCES AND SUPPORT



Every person living with lung cancer has their own unique challenges and needs for different kinds of support. The resources listed on this page are great places to find:

- Practical information about lung cancer
- Helpful tips for treatment
- Emotional support resources



American Lung Association is dedicated to improving lung health and preventing lung disease through education, advocacy, and research.



GO₂ Foundation for Lung Cancer provides life-changing patient information, support services, and resources to all those affected by lung cancer, free of charge.



LUNgevity Foundation offers a community of empowerment, support, and hope, with services and information on local events in your area.



LVNG With Lung Cancer is a community of more than 260,000 people around the globe who continue to inspire, support, educate, and connect with one another after being diagnosed with lung cancer.

TIPS FOR GOOD COMMUNICATION WITH YOUR CAREGIVER

Whether they're your close friends or family members, caregivers can play an important role when it comes to your health. They can provide you with support and help you throughout your treatment. But as they are supporting you, there are also some simple things you can do to help them in the process.



Talk it out. Communicating with your caregiver is essential. The more you talk, the more understanding and knowledgeable your caregiver will be.



Bring a friend. Be open to asking and receiving help from others. It can help take some weight off your and your caregivers' shoulders.



Join a support group. Try to find groups run by professional facilitators who can provide appropriate guidance for people living with Stage 3 NSCLC. You are not alone in this, and talking with others can help.



Make each other's day. Plan fun, easygoing activities with one another, no matter how big or small they may be. It's a nice way to take the focus off of treatment and reduce stress for you and your caregiver.

Please see additional Important Safety Information throughout and Full Prescribing Information including Medication Guide for **IMFINZI**.

ASTRAZENECA WANTS YOU TO HAVE THE BEST SUPPORT OPTIONS AVAILABLE



The AstraZeneca Access 360™ program can help you get started with IMFINZI.

For more information, call **1-844-ASK-A360 (1-844-275-2360)**, Monday–Friday from 8 AM–6 PM ET, or visit [MyAccess360.com](https://www.MyAccess360.com).







IMPORTANT SAFETY INFORMATION

WHAT IS THE MOST IMPORTANT INFORMATION I SHOULD KNOW ABOUT IMFINZI?

IMFINZI is a medicine that may treat certain cancers by working with your immune system. IMFINZI can cause your immune system to attack normal organs and tissues in any area of your body and can affect the way they work. These problems can sometimes become severe or life-threatening and can lead to death. You can have more than one of these problems at the same time. These problems may happen anytime during treatment or even after your treatment has ended.

Call or see your healthcare provider right away if you develop any new or worsening signs or symptoms, including:

-  **Lung problems:** cough, shortness of breath, and chest pain
-  **Intestinal problems:** diarrhea (loose stools) or more frequent bowel movements than usual; stools that are black, tarry, sticky, or have blood or mucus; and severe stomach-area (abdomen) pain or tenderness
-  **Liver problems:** yellowing of your skin or the whites of your eyes, severe nausea or vomiting, pain on the right side of your stomach area (abdomen), dark urine (tea colored), and bleeding or bruising more easily than normal
-  **Hormone gland problems:** headaches that will not go away or unusual headaches; eye sensitivity to light; eye problems; rapid heartbeat; increased sweating; extreme tiredness; weight gain or weight loss; feeling more hungry or thirsty than usual; urinating more often than usual; hair loss; feeling cold; constipation; your voice gets deeper; dizziness or fainting; and changes in mood or behavior, such as decreased sex drive, irritability, or forgetfulness



Kidney problems: decrease in your amount of urine, blood in your urine, swelling of your ankles, and loss of appetite



Skin problems: rash; itching; skin blistering or peeling; painful sores or ulcers in mouth or nose, throat, or genital area; fever or flu-like symptoms; and swollen lymph nodes



Pancreas problems: pain in your upper stomach area (abdomen), severe nausea or vomiting, and loss of appetite



Problems can also happen in other organs and tissues. These are not all of the signs and symptoms of immune system problems that can happen with IMFINZI. Call or see your healthcare provider right away for any new or worsening signs or symptoms, which may include: Chest pain, irregular heartbeats, shortness of breath or swelling of ankles; confusion, sleepiness, memory problems, changes in mood or behavior, stiff neck, balance problems, tingling, numbness or weakness of the arms or legs; double vision, blurry vision, sensitivity to light, eye pain, changes in eye sight; persistent or severe muscle pain or weakness, muscle cramps, joint pain, joint stiffness or swelling; and low red blood cells and bruising



Infusion reactions that can sometimes be severe or life-threatening. Signs and symptoms of infusion reactions may include: chills or shaking, itching or rash, flushing, shortness of breath or wheezing, dizziness, feel like passing out, fever, and back or neck pain



Complications, including graft-versus-host disease (GVHD), in people who have received a bone marrow (stem cell) transplant that uses donor stem cells (allogeneic). These complications can be serious and can lead to death. These complications may happen if you underwent transplantation either before or after being treated with IMFINZI. Your healthcare provider will monitor you for these complications

Please see additional Important Safety Information throughout and Full Prescribing Information including Medication Guide for IMFINZI.

IMPORTANT SAFETY INFORMATION (continued)

Getting medical treatment right away may help keep these problems from becoming more serious. Your healthcare provider will check you for these problems during your treatment with IMFINZI. Your healthcare provider may treat you with corticosteroid or hormone replacement medicines. Your healthcare provider may also need to delay or completely stop treatment with IMFINZI if you have severe side effects

Before you receive IMFINZI, tell your healthcare provider about all of your medical conditions, including if you:

- have immune system problems such as Crohn's disease, ulcerative colitis, or lupus
- have received an organ transplant
- have received or plan to receive a stem cell transplant that uses donor stem cells (allogeneic)
- have received radiation treatment to your chest area
- have a condition that affects your nervous system, such as myasthenia gravis or Guillain-Barré syndrome
- are pregnant or plan to become pregnant. IMFINZI can harm your unborn baby

Females who are able to become pregnant:

- Your healthcare provider will give you a pregnancy test before you start treatment with IMFINZI.
- You should use an effective method of birth control during your treatment and for 3 months after the last dose of IMFINZI. Talk to your healthcare provider about birth control methods that you can use during this time.
- Tell your healthcare provider right away if you become pregnant or think you may be pregnant during treatment with IMFINZI.
- are breastfeeding or plan to breastfeed. It is not known if IMFINZI passes into your breast milk. Do not breastfeed during treatment and for 3 months after the last dose of IMFINZI.

Tell your healthcare provider about all the medicines you take, including prescription and over-the-counter medicines, vitamins, and herbal supplements.

WHAT ARE THE POSSIBLE SIDE EFFECTS OF IMFINZI?

IMFINZI can cause serious side effects (see above):

The most common side effects of IMFINZI in people with unresectable Stage III NSCLC include cough, feeling tired, inflammation in the lungs, upper respiratory tract infections, shortness of breath, and rash.

Tell your healthcare provider if you have any side effect that bothers you or that does not go away. These are not all the possible side effects of IMFINZI. Ask your healthcare provider or pharmacist for more information.

Call your doctor for medical advice about side effects. You may [report side effects related to AstraZeneca products](#).² If you prefer to report these to the FDA, either visit www.FDA.gov/medwatch or call 1-800-FDA-1088.

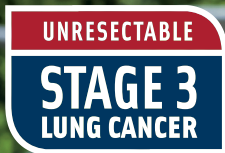
WHAT IS IMFINZI?

IMFINZI is a prescription medicine used to treat adults with **a type of lung cancer called non-small cell lung cancer (NSCLC)**. IMFINZI may be used when your NSCLC has not spread outside your chest, cannot be removed by surgery, and has responded or stabilized with initial treatment with chemotherapy that contains platinum, given at the same time as radiation therapy.

It is not known if IMFINZI is safe and effective in children.

Please see additional Important Safety Information throughout and Full Prescribing Information including Medication Guide for IMFINZI.





I'M IN *for what matters most*

I'M IN TO ASK MY DOCTOR ABOUT IMFINZI

LEARN MORE AT IMFINZI.COM

Or call the AstraZeneca Information Center at **1-800-236-9933**
Monday-Friday, 8 AM–6 PM ET, excluding holidays.



IMFINZI is a registered trademark and AstraZeneca Access 360 is a trademark of the AstraZeneca group of companies. ©2024 AstraZeneca. All rights reserved. US-84404 Last Updated 1/24